



# NV SERIES HEAT PUMP OR COOLING ONLY SYSTEMS



WALL-MOUNTED SYSTEMS

Up to 17.5 SEER / Up to 9.3 HSPF / Up to 9.85 EER  
VARIABLE-SPEED, INVERTER, COMPRESSOR

**Today, the air is perfect.** Perfect temperature. Perfect humidity. Perfectly clean and fresh, like just after a rainstorm. And the only thing more perfect than this outdoor scenario is that it's all happening inside. Because that's where we work. That's where we play, where we sleep, where we truly live.

And that's why at Daikin, we aim to make the air inside as refreshing as the outside. Better comfort. Better control and efficiency. Better quality. So you can create your own unique ecosystem. And everyday is perfect. **Inside and out.**

## NV Series Heat Pump or Cooling Only Systems VARIABLE-SPEED, INVERTER, COMPRESSOR



### *Perfecting The Air We Share*

A better understanding of how people inhabit their living spaces has led to products designed to create indoor environments that help use energy resources more effectively. Heat pumps extract or reject heat from the outside air, even in cold weather. They use an electrically powered compressor and are extremely effective

at heating and cooling an apartment or a house. Daikin heat pumps are quiet and discreet, and use state-of-the-art technology to keep your energy bills low. With a Daikin heat pump, a large portion of the energy used to heat or cool your home comes from the outside air, a free and infinitely renewable resource.

# Daikin NV Series Heat Pump or Cooling Only Systems

An ideal system for a wide range of applications with robust features.

This feature-packed wall-mounted unit offers extended capacity in an elegant design. Comfort Airflow, 3-D Airflow and Wide Angle Louvers are just a few of the features used to improve comfort in large spaces.

## Ideal solution for spaces with:

- » Ceiling void or attic that does not allow for a viable duct run option.
- » Renovations and remodeling
- » Basements, attics and garages
- » New construction

## Features

- » **Energy Efficient** – Up to 17.5 SEER, up to 9.3 HSPF, up to 9.85 EER – Variable-Speed, Inverter, Compressor
- » **Cooling Range** – 50°- 115°F (Extended operation to -22°- 115°F with facility setting and air adjustment grille)
- » **Heating Range** – 5°- 65°F
- » Indoor Sound Pressure as Low as 35 dB(A)
- » Outdoor Sound Pressure as Low as 56 dB(A)

Find a full overview of features and benefits of the NV Series on page 4 and 5.



\* Complete warranty details available from your local dealer/contractor or at [www.daikincomfort.com](http://www.daikincomfort.com).





### INDOOR UNIT FEATURES



**Indoor Unit Quiet Operation.** Sound levels are reduced by 2-3 decibels (dB) from the low fan speed for quieter and gentler heating and cooling.



**Intelligent Eye.** The intelligent eye is an infrared sensor with the ability to sense movement in the room. When you are in the room, the air conditioner operates normally. If you leave the room for more than 20 minutes the air conditioner automatically changes to an energy-saving operation. Using the intelligent eye, savings of up to 20% in cooling and up to 30% in heating can be achieved compared to units without this feature.



**Program Dry Function.** This gives priority to reducing the level of humidity in the room rather than room temperature.



**Auto Fan Speed.** To reduce operating sound and power consumption, the fan speed is automatically controlled by the microprocessor to suit the controller setting and prevailing room temperature.



**Wide Angle Louvers.** Smoothly curved wide-angle louvers provide wide airflow coverage for effective heating and cooling no matter where the indoor unit is placed within the room.



**Dual Flap System.** This system directs warm air to the floor in winter and cool air across the room in summer to help maximize efficiency and comfort. The large flap governs airflow direction while the small flap (or diffuser) swings, producing fine air currents that help circulate the air around the room.



**Comfort Mode.** Comfort mode operation improves comfort. When cooling, the flap positions itself horizontally to keep cold airflow from being blown directly onto the body. When heating, the flap turns vertically downwards to drive warm air to the bottom of the room.



**3-D Airflow.** Combines vertical and horizontal auto-swing to circulate cool/warm air to the corners of large spaces

### CONTROLS FEATURES



**Remote Controller with Back-lit Display.** Features a back-lit LCD and luminescent control buttons, allowing for easy viewing in dimly lit rooms.



**24-Hour On/Off Timer.** The timer can be preset to start and stop the air conditioner at any time within a 24-hour period. Once the times are set, the air conditioner can be operated for a period by simply pressing the ON or OFF timer buttons.



**Weekly Timer.** The weekly timer function makes it easy to enter up to four settings per day for each day of the week. The weekly timer function not only allows you to program on and off time, but also the desired temperature.

### OUTDOOR UNIT FEATURES



**Low Ambient Cooling.** Cooling operation down to -22° F (-30° C) outside temperature for cooling only models. No field installed kit required.



**Outdoor Unit Quiet Operation.** Outdoor unit sound levels can be reduced by 3dB for times when quieter operation is needed.



**Automatic Operation.** For unattended year-round comfort, this function allows the unit to automatically switch between heating and cooling modes as required. (heat pumps types only)



**Auto-Restart.** The unit memorizes the operation mode, airflow and temperature settings. Should there be a power failure when the unit is in operation, it will automatically return to the same operating conditions when the power is restored.



**Self-Diagnosis.** In the event that a problem develops with the unit, malfunction codes can be displayed on the liquid crystal panel of the remote control for fast and easy fault diagnosis.



**Anti-Corrosion.** The special anti-corrosion coating on the outdoor unit heat exchanger provides resistance to salt damage and atmospheric corrosion.



### **Titanium Apatite Photocatalytic Air-Purifying Filter.**

This filter combines the air-purifying filter and titanium apatite photocatalytic deodorizing filter in a single highly effective unit. The filter can last for up to three years without replacement if washed once every six months.



### **Night Set Mode.**

Through the use of the 'Timer-OFF Circuit', the preset room temperature gently rises in cooling or falls in heating before the unit stops. This energy-saving feature allows you to sleep comfortably without feeling a sudden change in the room temperature, while at the same time saving energy.



### **Powerful Operation.**

Pushing the POWERFUL button on the remote control gives you a boost in cooling or heating power for a 20-minute period, even if the unit is already operating at high capacity.



### **Wipe-Clean Flat Panel.**

The flat panel models can be cleaned with only the single pass of a cloth across their smooth surface. The flat panel can also be easily removed for more thorough cleaning.



**Hot Start.** When the heating operation starts or when the unit changes from cooling to heating there is no cold draft released into the room. (Heat pumps only)



**Automatic Defrosting.** Sensor performs automatic defrosting of the outdoor heat exchanger if necessary, ensuring optimum heating performance. (Heat pumps only)



**Econo Mode.** Limits the maximum operating current and power consumption of the outdoor unit by approximately 30% during start-up. This saves energy and reduces the load on the electrical circuit when multiple electrical devices are used simultaneously.



# NV SERIES SINGLE-ZONE SYSTEMS COOLING ONLY AND HEAT PUMP



## Smart Inverter Technology

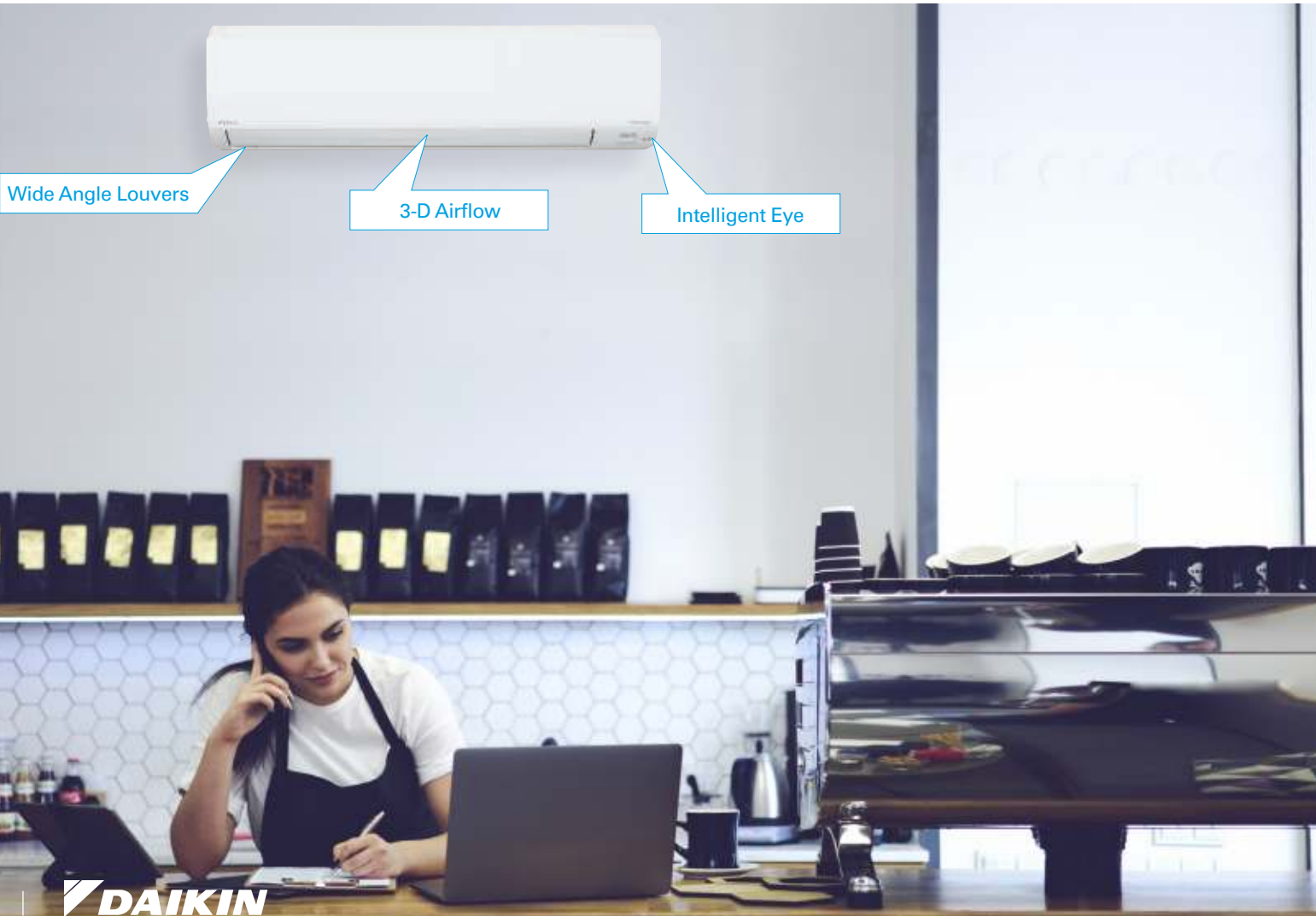
Integrated with a variable-speed inverter compressor, Daikin systems deliver the capacity required to maintain desired room conditions, typically reducing energy consumption by up to 30% or more (compared to traditional fixed-speed ducted systems). This technology minimizes temperature fluctuations and provides continuous cooling and heating comfort.



Learn more about Daikin Inverter Technology at:  
[www.daikincomfort.com/go/inverter/](http://www.daikincomfort.com/go/inverter/)

## Feel the Difference

Comfort Airflow, 3-D Airflow, and Wide Angle Louvers are just a few of the features used in the NV Series to improve comfort in a room. Comfort Mode minimizes drafts by positioning flaps horizontally, so that cold air does not blow directly on the body in cooling mode, and downwards to drive warm air to the bottom of the room while heating. The 3-D Airflow setting combines vertical and horizontal auto-swing to circulate air throughout a large space.



Wide Angle Louvers

3-D Airflow

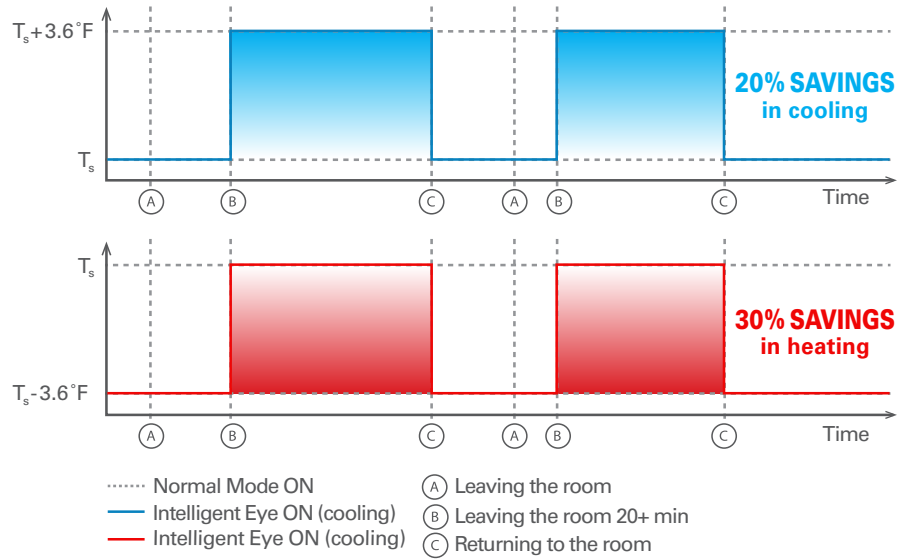
Intelligent Eye

# NV SERIES SINGLE-ZONE SYSTEMS COOLING ONLY AND HEAT PUMP

## See the Difference

Equipped with the intelligent eye feature, this function detects movement and automatically changes to an energy saving mode when movement is not detected for over 20 minutes. Normal operation resumes once movement is detected, ensuring a comfortable experience and offering savings up to 20% in cooling and up to 30% in heating compared to units without this feature.

Intelligent Eye Savings Operation



## Experience the Difference

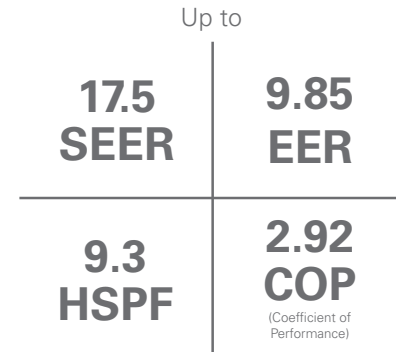
Activated by the exposure to natural light, the titanium apatite photocatalytic air purification filter can last for up to three years with proper maintenance.

## Knowledge is power.

In general, system performance is measured by a higher Seasonal Energy Efficiency Ratio (SEER) and Energy Efficiency Ratio (EER). Higher ratings mean lower operating costs. Similarly, a higher rated Heating Seasonal Performance Factor (HSPF) and Coefficient of Performance (COP) means a more efficient air-source heat pump.

## Why is it important?

The COP of a heat pump is the ratio of:  $\text{COP} = \frac{\text{energy out}}{\text{energy in}}$   
 When the COP is  $>1$ , the result is a system providing more heating energy than energy consumed. As the COP increases, the higher the efficiency — resulting in lower utility costs.



Single-Zone Heat Pump  
Efficiency ratings







## Individual comfort and control.

Daikin systems come standard with an infrared remote controller allowing you to access all functions at the click of a button.

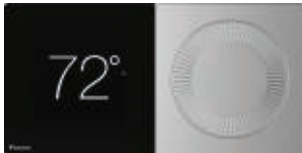
## From anywhere in the world. Or your living room.



It can happen to anyone. You forgot to change the temperature of your heat pump system or air conditioner before leaving the house, or you will be delayed returning home and wish to avoid needlessly heating or cooling your home. What in the past would have resulted in wasted energy is no longer a problem. With the DKN App, you are always in control. You can use your tablet or smart-phone to access your Daikin system via the internet\*.

\* Requires purchase and installation of AZAI6WSPDKB Wi-Fi adaptor.

## Daikin *One+* Smart Thermostat



The Daikin *One+* smart thermostat is now available for single and multi-zone indoor unit models. With the new translation adaptor, connecting the Daikin *One+* smart thermostat provides several user features including remote monitoring, control and geofencing using the Daikin *One* home app, Google, and Amazon voice assistants. Learn more at [www.daikinone.com](http://www.daikinone.com).

\*\* Note that the handheld remote that comes with the indoor unit should not be used together with the Daikin *One+* smart thermostat.

## Daikin DKN Plus Interface



The new Daikin DKN Plus Interface (AZAI6WSPDKC) enables the energy-efficient control of Daikin air conditioners by a third-party thermostat or an automation system.

With this interface, third-party devices or systems can control the Single-Zone and Multi-Zone indoor units through the Daikin DKN NA App, Cloud API, Modbus®, BACnet™ MS/TP, or thermostat relay contacts. This interface can be commissioned easily through the DKN Cloud NA app via Bluetooth® Low Energy (BLE). Learn more at [www.daikinac.com](http://www.daikinac.com).

## Daikin *SplitXpress* Selection Tool

The new interactive *SplitXpress* mobile app and website provide a complete product selection tool to streamline system selection for single and multi-zone projects. Users can create equipment selections and add accessories / pricing details to quickly share quotes with customers. Available for free on the App Store (iOS) and Google Play (Android), and at <https://splitxpress.daikincity.com>.

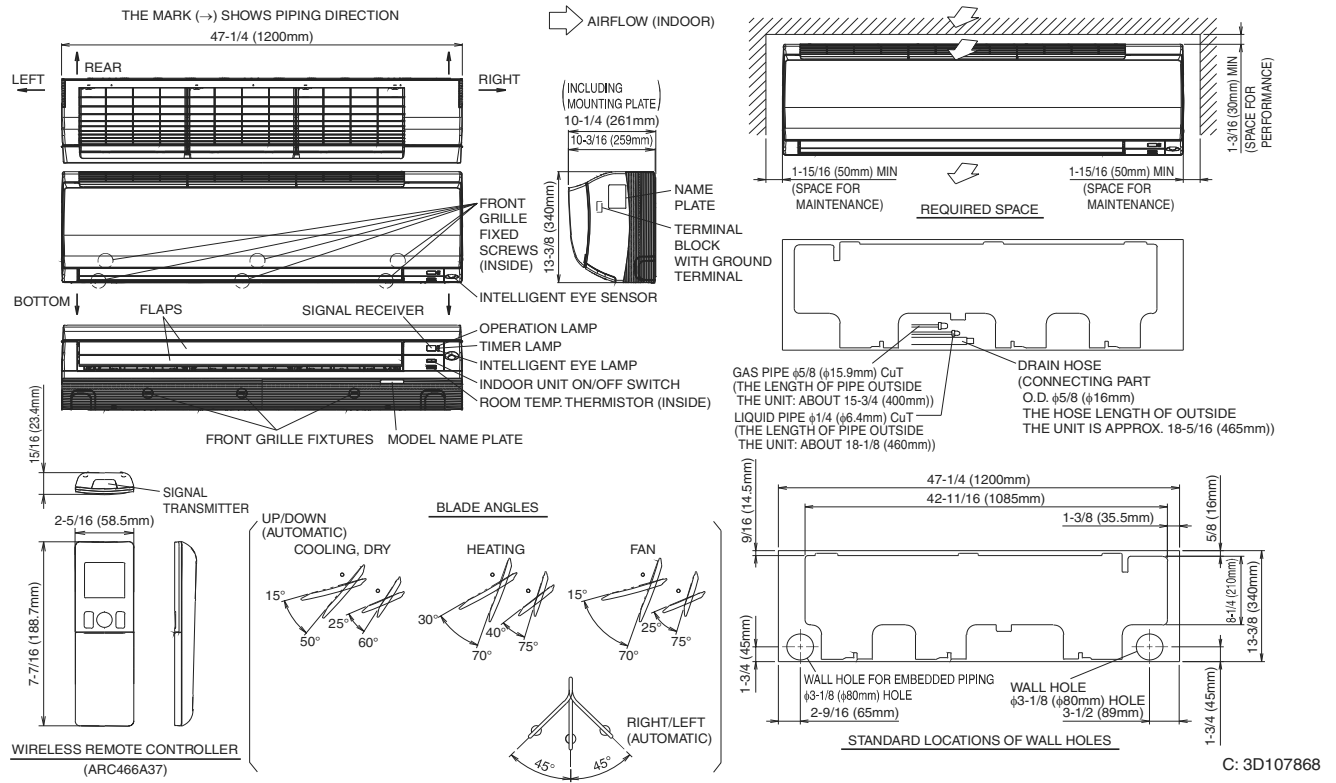




# NV SERIES PRODUCT SPECIFICATIONS

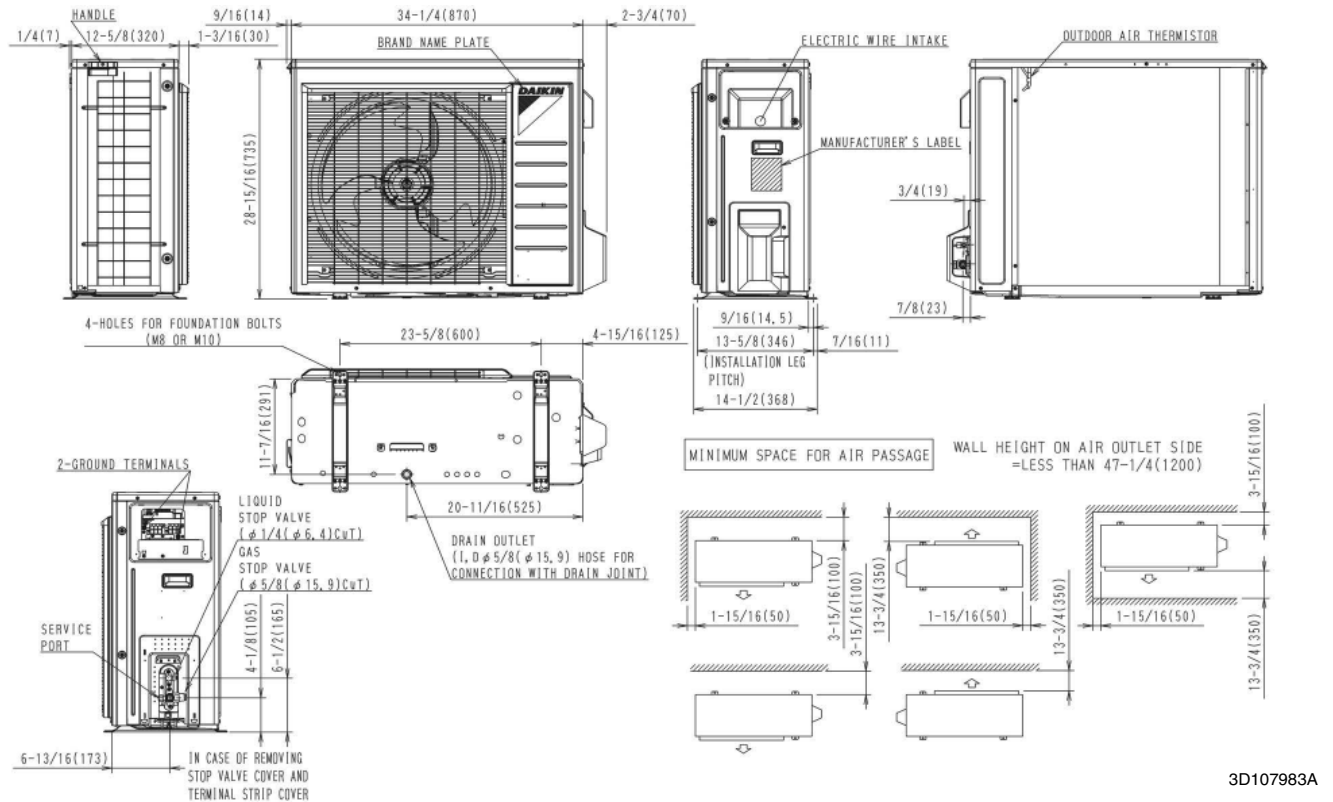
## Indoor Unit:

### FTX30/36NVJU



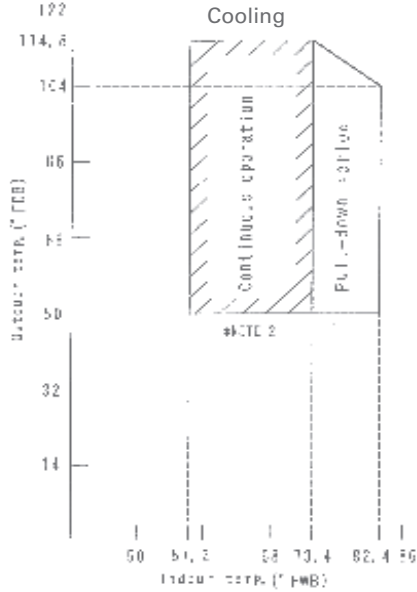
## Outdoor Unit:

### RK(X)30/36NMVJUA

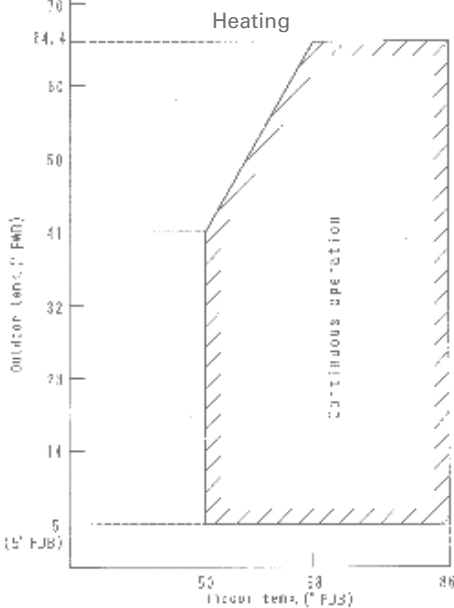


## STANDARD OPERATION LIMITS

### RK30/36NMVJUA and RX30/36NMVJUA



### RK30/36NMVJU



SYSTEM PERFORMANCE			
Model	Indoor (Cooling Only and Heat Pump)	2.5 Tons	3.0 Tons
	Outdoor (Cooling Only)	FTX30NMVJU	FTX36NMVJU
	Outdoor (Heat Pump)	RK30NMVJUA	RK36NMVJUA
Cooling Capacity (Rated)	Btu/h	31,400	34,400
Cooling Capacity (Min. - Max.)	Btu/h	10,200 - 31,400	10,200 ~ 33,200 - 34,400
Heating Capacity (Rated)	Btu/h	34,800	36,000
Heating Capacity (Min. - Max.)	Btu/h	10,200 - 34,800	10,200 ~ 35,200 - 36,000
SEER		17.5	15.9
EER		9.85	9.1
HSPF*		9.3	9.2
AHRI # (Cooling Only)		205663340	205663341
AHRI # (Heat Pump)		205663347	205663348
Piping Connections	Liquid	in. (mm)	Ø 1/4 (Ø 6.4)
	Gas		Ø 5/8 (Ø 15.9)
	Condensate Drain		Ø 5/8 (Ø 15.9)
Max. Interunit Piping Length	ft. (m)	98-3/8 (29.8)	
Max Interunit Piping Height		65-5/8 (20)	
Chargeless		32-13/16 (9.8)	
Amount of Additional Charge of Refrigerant	oz./ft (g/m)	0.32 (30)	
Indoor Dimensions (H × W × D)	in. (mm)	13-3/8 x 47-1/4 x 10-3/16 (350 x 1200 x 259)	
Outdoor Dimensions (H × W × D)	in. (mm)	28-15/16 x 34-1/4 x 12-5/8 (729 x 870 x 320)	
Operating Range - Cooling - RX/RK Standard	°F DB (°C)	50°F - 115°F (10°C - 46°C)	
Operating Range - Cooling - RX/RK Enhanced*	°F DB (°C)	14°F - 115°F (-10°C - 46°C)	
Operating Range - Cooling - RX/RK Low Ambient**	°F DB (°C)	-4°F - 115°F (-20°C - 46°C)	
Operating Range - Cooling - RK Only - Ultra Low Ambient***	°F DB (°C)	-22°F - 115°F (-30°C - 46°C)	
Operation Range - Heating†	°F WB (°C)	5°F - 65°F (-15°C - 18°C)	

\* Activated with a dipswitch setting. Refer to installation manual for more details.

\*\* Activated with a dipswitch setting and use of air direction adjustment grille (KPW063A4). Refer to installation manual for more details.

\*\*\* Activated with additional dipswitch setting and notes per \*\*. Refer to installation manual for more details.

† Applicable to heat pump models only.

Unit Combination		Power Supply		Compressor		OFM		IFM		
Indoor Unit	Outdoor Unit	Hz - Volts	Voltage Range	MCA	MOP	RLA	W	FLA	W	FLA
FTX30NVJU	RK30NMVJUA	60 - 208	Min. 187 V	17	20	16.25	93	0.62	64	0.37
		60 - 230	Max. 253 V							
FTX36NVJU	RK36NMVJUA	60 - 208	Min. 187 V	17	20	16.25	123	0.83	64	0.37
		60 - 230	Max. 253 V							
FTX30NVJU	RX30NMVJUA	60 - 208	Min. 187 V	19.8	20	18.25	93	0.62	64	0.37
		60 - 230	Max. 253 V							
FTX36NVJU	RX36NMVJUA	60 - 208	Min. 187 V	19.8	20	18.25	123	0.83	64	0.37
		60 - 230	Max. 253 V							

Notes:

1. The graphs are based on the following conditions:

- Equivalent piping length 25 ft.
- Level difference 0 ft.
- Air flow rate High

2. Facility setting (cooling at low outdoor temperature):

- This function is limited only for facilities (the target of air conditioning is equipment such as computer)
- Never use it in a residence or office (the space where there is a human)
- Refer to the installation manual in detail of setting

Indoor Unit	Optional Accessories	Outdoor Unit	Optional Accessories
BRC944B2	Wired Remote Controller (Requires 1 cord below)	KPW063B4	Air Direction Adjustment Grille
BRCW901A03	Wired Remote Controller Cord (Shielded wire) 9.8 ft	KKG063A42	Back Protection Wire Net
BRCW901A08	Wired Remote Controller Cord (Shielded wire) 26.3 ft	KKP937A4	Drain Plug - Standard
KAF970A48	Titanium Apatite Deodorizing Filter (Without frame) Standard	KEH063A4E	Drain Pan Heater
KKF910AA4	Remote Controller Loss Prevention with Chain	KPS063A41	Snow Hood (Intake side panel)
DTST-ONE-ADA-A	Daikin One+ smart thermostat	KPS063A44	Snow Hood (Intake side panel)
AZAI6WSCDKB	DKN Residential Wi-Fi Adaptor	KPS063A47	Snow Hood (Outlet)
KRP928BB2S	RA Interface Adaptor for DIII-Net		
AZAI6WSPDKC	DKN Plus Interface		





## About Daikin:

Daikin Industries, Ltd. (DIL) is a global Fortune 1000 company and is recognized as one of the largest HVAC (Heating, Ventilation, Air Conditioning) manufacturers in the world. Founded in 1924, Daikin is approaching 100 years of HVAC worldwide leadership. DIL is primarily engaged in developing indoor comfort systems and refrigeration products for residential, commercial, and industrial applications. Its consistent success is derived, in part, from a focus on innovative, energy-efficient, and premium quality indoor climate and comfort management solutions.

## WARNINGS:

- » Always use a licensed installer or contractor to install this product. Do not try to install the product yourself. Improper installation can result in water or refrigerant leakage, electrical shock, fire or explosion.
- » Use only those parts and accessories supplied or specified by Daikin. Ask a licensed contractor to install those parts and accessories. Use of unauthorized parts and accessories or improper installation of parts and accessories can result in water or refrigerant leakage, electrical shock, fire or explosion.
- » Read the User's Manual carefully before using this product. The User's Manual provides important safety instructions and warnings. Be sure to follow these instructions and warnings.
- » For any inquiries, contact your local Daikin sales office.

*App Store is a registered trademark of Apple Inc.*

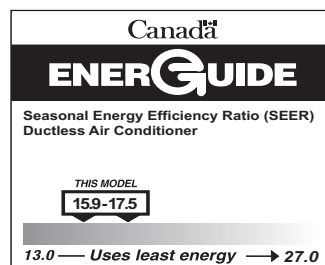
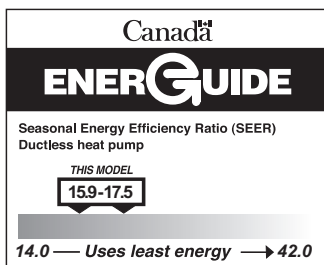
*Google Play and the Google Play logo are trademarks of Google LLC.*

*Google, Google Assistant, and all related logos are trademarks of Google LLC or its affiliates.*

*Amazon, Alexa and all related logos are trademarks of Amazon.com, Inc. or its affiliates.*

*BACnet™ is a trademark of ASHRAE.*

*Modbus® is a registered trademark of Schneider Electric USA, Inc.*



## ADDITIONAL INFORMATION

Before purchasing this appliance, read important information about its estimated annual energy consumption, yearly operating cost, or energy efficiency rating that is available from your retailer.



Our continuing commitment to quality products may mean a change in specifications without notice.

© 2022 **DAIKIN COMFORT TECHNOLOGIES NORTH AMERICA, INC.** · Houston, Texas · USA · [www.daikincomfort.com](http://www.daikincomfort.com) or [www.daikinac.com](http://www.daikinac.com)

