



## DAIKIN AURORA 4-PORT MULTI-ZONE HEAT PUMP SYSTEM

3 TON, 2-4 ZONE SYSTEMS  
Up to 21.7 SEER / Up to 11.2 HSPF /  
Up to 12.5 EER

**Today, the air is perfect.** Perfect temperature. Perfect humidity. Perfectly clean and fresh, like just after a rainstorm. And the only thing more perfect than this outdoor scenario is that it's all happening inside. Because that's where we work. That's where we play, where we sleep, where we truly live.

And that's why at Daikin, we aim to make the air inside as refreshing as the outside. Better comfort. Better control and efficiency. Better quality. So you can create your own unique ecosystem. And everyday is perfect. **Inside and out.**

**Daikin AURORA Multi-Zone Heat Pump**  
INVERTER, VARIABLE-SPEED COMPRESSOR



**AIR INTELLIGENCE** built inside

A better understanding of how people inhabit their living spaces has led to products designed to create indoor environments that help use energy resources more effectively. Heat pumps extract or reject heat from the outside air, even in cold weather. They use an electrically powered compressor and are extremely effective at

heating and cooling an apartment, home or a commercial space. Daikin heat pumps are quiet and discreet, and use state-of-the-art technology to help keep your energy bills low. With a Daikin heat pump, a large portion of the energy used to heat or cool your home comes from a free and infinitely renewable resource, the outside air.



## Comfort

We offer a wide range of products, and always provide you with the ideal solution, whether for an apartment, condo or a house. Our units are whisper quiet and, with their specially designed airflow pattern, they create your ideal indoor climate.

Daikin units are designed to include features that let you create your own unique ecosystem. From the wide angle louver design and intelligent eye technology to the auto-swing and comfortable mode controller settings, effective heating and cooling is ensured throughout the space.

## Smart inverter technology

Integrated with an inverter variable-speed compressor, Daikin systems deliver the capacity required to maintain desired room conditions, typically reducing energy consumption by up to 30% or more (compared to traditional fixed-speed ducted systems). This technology minimizes temperature fluctuations and provides continuous cooling and heating comfort.

## Energy efficiency

Our products are designed to be highly efficient all year round, and their low energy consumption is reflected in low energy bills for you.

## Control\*\*

Our expertise makes life easier for you, allowing you to control your system via a smartphone app or a user-friendly remote control.

## Reliability

Daikin products are renowned for their reliability. And you can rely on outstanding limited warranties\* to match.



\* Complete warranty details available from your local dealer/contractor or at [www.daikincomfort.com](http://www.daikincomfort.com) or [www.daikinac.com](http://www.daikinac.com). To receive the 12-Year Parts Limited Warranty, online registration must be completed within 60 days of installation. Online registration is not required in California or Quebec.

\*\*Adaptor required.



# 4-PORT MULTI-ZONE HEAT PUMP SYSTEM

Up to 21.7 SEER / Up to 11.2 HSPF / Up to 12.5 EER  
INVERTER, VARIABLE-SPEED COMPRESSOR

## Flexible options providing high efficiency and comfort

The Daikin *AURORA* multi-zone heat pump system is a flexible solution for individual zone comfort. Connecting up to 4 indoor units to a single outdoor unit reduces installation space and costs while maximizing comfort and energy efficiency. With a choice of indoor unit types in a wide range of capacities, Daikin *AURORA* multi-zone heat pump system allows mix and matched combinations. Whether your rooms are large or small, Daikin units have the capacities to provide the climate you want and which suit your budget.

### Ideal solution for:

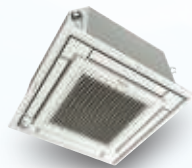
- » Primary living areas  
(master bedrooms and living rooms)
- » Hot or cold rooms
- » Rooms with poor air flow
- » Renovations and remodeling
- » Basements, attics and garages
- » New construction



### Compatible Indoor units:



**FDMQ**  
Ducted Concealed



**FFQ - DAIKIN VISTA**  
Ceiling Cassette



**FTXS/CTXS**  
Wall Mount



**FDXS/CDXS**  
Slim Duct



**FTXR - DAIKIN EMURA**  
Wall Mount



**FVXS**  
Floor Mount

## You're always in control.



### Individual comfort and control

Daikin systems have an available infrared remote controller allowing you to access all functions at the click of a button.

### From anywhere in the world. Or your living room.\*



It can happen to anyone. You forgot to change the temperature of your heat pump system or air conditioner before leaving the house, or you will be delayed returning home and wish to avoid needlessly heating or cooling your home. What in the past would have resulted in wasted energy is no longer a problem. With the Daikin Comfort Control App or DKN App, you are always in control. You can use your tablet or smart-phone to access your Daikin system via the internet.

\* Requires BRP072A43 or AZAI6WSCDKA wi-fi adaptors depending on the indoor unit.

# Daikin *AURORA* Multi-Zone Heat Pump System

## Designed for living: Solutions for hot and cold climates


Total indoor climate control means having the ability to select a desirable temperature for each space in a house and to have that temperature maintained no matter what the temperature outside — from -13°F / -25°C to 115°F / 46°C, ensuring all year round comfort. For all regions, the outdoor unit of this *AURORA* multi-zone heat pump system have been





## Premium comfort features:

- » **Energy Efficient** – Up to 21.7 SEER / Up to 11.2 HSPF / Up to 12.5 EER for ultra-efficient cooling and heating operation and reduced operating costs compared to conventional lower-efficiency systems
  - » **Advanced Filtration** – Long life, washable filters
  - » **Enhanced Capacity** – Delivers up to 100% nominal cooling capacity at 115°F / 46°C
  - » Delivers up to 10% higher cooling capacity at 115°F (46°C) when compared to a standard multi system\*
  - » Up to 100% heating capacity at 5°F / -15°C and operate efficiently as low -13°F ambient temperature
- \* 4MXS36RMVJU with 4xFTXS09L = 19,390 Btu / Hr cooling capacity at 114.8°F.

## Outdoor unit features:

 **Outdoor Unit Quiet Operation** can reduce sound levels by 3dB for times when quieter operation is needed.

 **Auto-Restart mode** allows the unit to memorize the operation mode, airflow and temperature settings. Should there be a power failure when the unit is in operation, it will automatically return to the same operating conditions when the power is restored.

 **Intelligent Defrost Mode** – The outdoor unit will enable this mode to help prevent frost/ice from building up in cold climate conditions. It will also help with longer heating operation time for additional comfort for occupants (compared to HVAC systems without this function).

## New drain pan

Newly designed drain pan on outdoor unit to help prevent condensate from freezing and causing damage to the fan and coil.



## Knowledge is power

In general, system performance is measured by a higher Seasonal Energy Efficiency Ratio (SEER) and Energy Efficiency Ratio (EER). Higher ratings mean lower operating costs. Similarly, a higher rated Heating Seasonal Performance Factor (HSPF) and Coefficient of Performance (COP) means a more efficient air-source heat pump.

## Why is it important?

The COP of a heat pump is the ratio of:  $COP = \frac{\text{energy out}}{\text{energy in}}$   
When the COP is >1, the result is a system providing more heating energy than energy consumed. As the COP increases, the higher the efficiency — resulting in lower utility costs.

To learn more about potential rebates and incentives in your area, please visit our rebate center at: [www.daikincomfort.com/rebates](http://www.daikincomfort.com/rebates)

|                              |                             |
|------------------------------|-----------------------------|
| Up to<br><b>21.7</b><br>SEER | Up to<br><b>12.5</b><br>EER |
| Up to<br><b>11.2</b><br>HSPF | Up to<br><b>4.25</b><br>COP |

(Coefficient of Performance)

Multi-Zone *AURORA* Heat Pump Efficiency Ratings



# COMPATIBLE INDOOR UNIT ZONING COMBINATION EXAMPLE

## ZONE 1



### EMURA

Designed to perfectly balance technological capability and the beauty of aerodynamics

- » Iconic award winning design and engineering excellence
- » Elegant finish in pure matte white or modern silver
- » Two-area intelligent eye sensor controls comfort and allows for energy savings during unoccupied periods
- » Titanium apatite photo-catalytic air purification

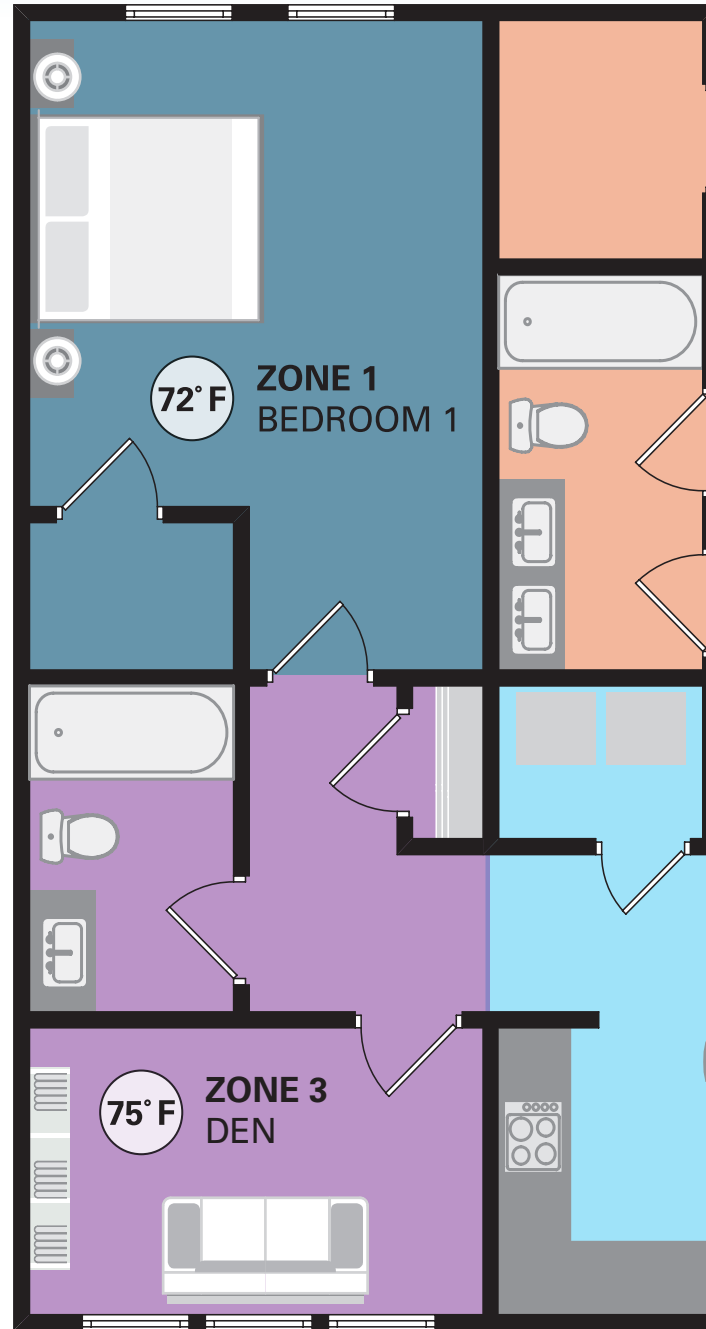
## ZONE 3



### FDMQ

Ducted Concealed Unit capable of up to .6 esp

- » Higher external static pressure capabilities allow for longer duct runs and easily implementing high MERV filters
- » Drain pan inspection port makes it easy to observe drain pan conditions
- » Rear or bottom return air configurations for installation flexibility



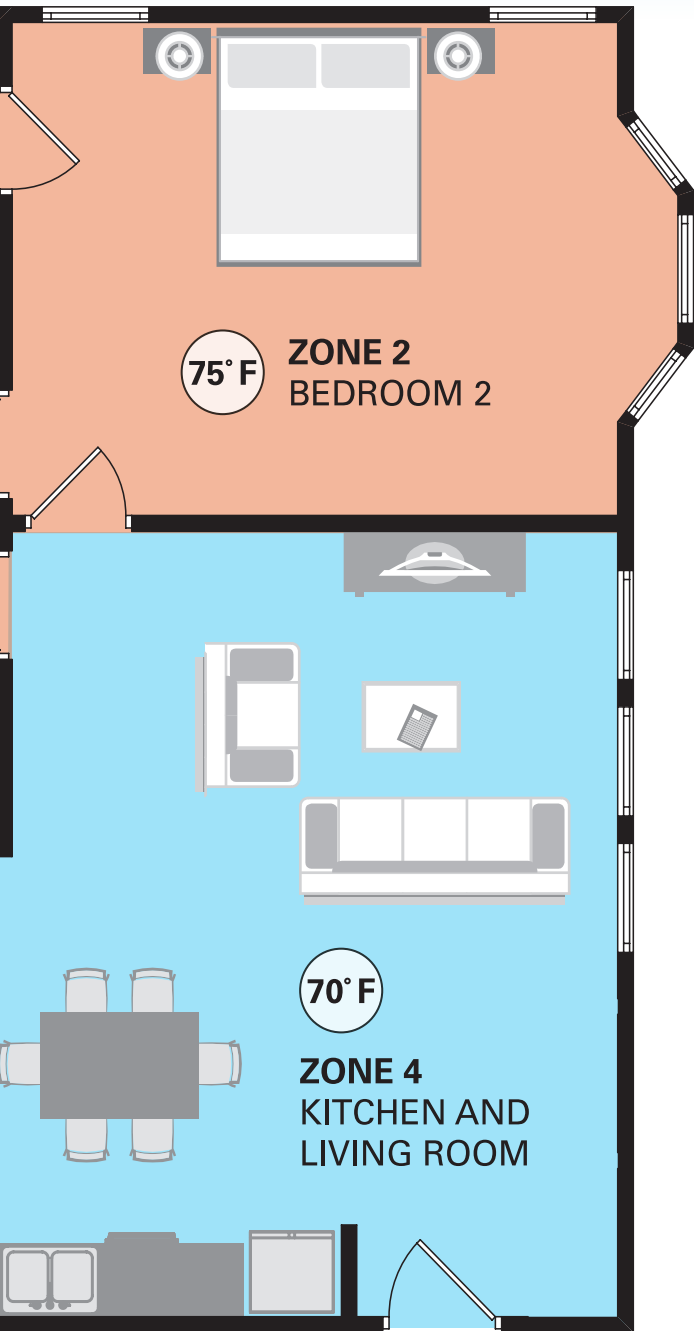
## ADDITIONAL INDOOR UNIT OPTIONS

### FDXS

Slim duct concealed ceiling unit capable of up to 0.18 esp

- » External static pressure facilitates unit's use with minimal length of duct runs
- » Discretely concealed in the ceiling: only the suction & discharge grills are visible
- » DC fan motor for low energy consumption





## ZONE 2

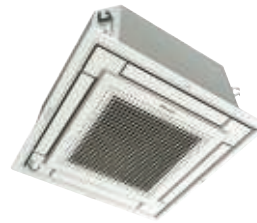


### FVXS

Floor mounted unit providing optimal comfort with dual airflow

- » Its low height enables the unit to fit perfectly beneath a window
- » Can be installed against a wall or recessed
- » Vertical auto swing moves the louver up and down for efficient air and temperature distribution

## ZONE 4



### VISTA

Unique design that integrates seamlessly into the ceiling

- » Iconic award winning design and engineering excellence
- » Elegant finish in white or silver or white combination
- » DC fan motor and two optional intelligence sensors for energy efficiency


## FTXS

Discreet wall-mounted unit providing high efficiency and comfort

- » Discreet, stylish front panel blends easily with the wall, and matches all interior decors
- » Dry program allows humidity levels to be reduced without variations in room temperature
- » Intelligent Eye function reduces heating or cooling operation during unoccupied periods





| Outdoor Units | 4-Port (4MXL36TVJU)                |   | AHRI#     |
|---------------|------------------------------------|---|-----------|
| Non-Ducted    | 21.7 SEER / 12.5 EER / 11.2 HSPF   |  | 202522139 |
| Ducted        | 16.9 SEER / 11 EER / 9.1 HSPF      |   | 202521824 |
| Mixed         | 19.3 SEER / 11.75 EER / 10.15 HSPF |   | 202522140 |

| Indoor Units / Dimensions (HxWxD) | Unit Class |   |               |                           |   |                           |
|-----------------------------------|------------|---|---------------|---------------------------|---|---------------------------|
|                                   | 07         | 09  | 12            | 15                        | 18  | 24                        |
| EMURA (Wall Mount)                |            | FTXR09TVJUW/S<br>11-15/16 x 39-5/16 x 8-3/8 | FTXR12TVJUW/S |                           | FTXR18TVJUW/S<br>11-15/16 x 39-5/16 x 8-3/8 |                           |
| VISTA (Ceiling Cassette)          |            | FFQ09Q2VJU                                  | FFQ12Q2VJU    | FFQ15Q2VJU                | FFQ18Q2VJU                                  |                           |
|                                   |            | 10-1/4 x 22-5/8 x 22-5/8                    |               |                           |   |                           |
| FTXS Wall Mount                   | CTXS07LVJU | FTXS09LVJU                                  | FTXS12LVJU    | FTXS15LVJU                | FTXS18LVJU                                  | FTXS24LVJU                |
|                                   |            | 11-5/8 x 31-1/2 x 8-7/16                    |               | 13-3/8 x 41-5/16 x 9-3/4  |   |                           |
| FVXS Floor/Low Wall Mount         |            | FVXS09NVJU                                  | FVXS12NVJU    | FVXS15NVJU                | FVXS18NVJU                                  |                           |
|                                   |            | 23-5/8 x 27-9/16 x 8-1/4                    |               |                           |   |                           |
| FDMQ Ducted Concealed             |            | FDMQ09RVJU                                  | FDMQ12RVJU    | FDMQ15RVJU                | FDMQ18RVJU                                  | FDMQ24RVJU                |
|                                   |            | 9-5/8 x 27-9/16 x 31-1/2                    |               | 9-5/8 x 39-3/8 x 31-1/2   |   |                           |
| FDXS/CDXS Slim Duct               | CDXS07LVJU | FDXS09LVJU                                  | FDXS12LVJU    | CDXS15LVJU                | CDXS18LVJU                                  | CDXS24LVJU                |
|                                   |            | 7-7/8 x 27-9/16 x 24-7/16                   |               | 7-7/8 x 35-7/16 x 24-7/16 |   | 7-7/8 x 43-5/16 x 24-7/16 |



Proper sizing and installation of equipment is critical to achieve optimal performance. Split system air conditioners and heat pumps must be matched with appropriate coil components to meet **ENERGY STAR**® criteria. Ask your contractor for details or visit [www.energystar.gov](http://www.energystar.gov).



Use of the AHRI Certified™ mark indicates a manufacturer's participation in the certification program. For verification of certification for individual products, go to [www.ahridirectory.org](http://www.ahridirectory.org)

## Why choose Daikin?

Daikin is the world leader when it comes to heating and cooling. Thanks to our constant innovation in comfort, energy efficiency, control and reliability, we define the benchmarks for quality within the industry.

## Reviews from our most important critics.

Daikin offers a wide selection of choices for energy-efficient indoor comfort. As a worldwide leader in heating and cooling technology, Daikin is also a highly-rated brand. See for yourself at [www.daikincomfort.com/reviews](http://www.daikincomfort.com/reviews).

### ADDITIONAL INFORMATION

Before purchasing this appliance, read important information about its estimated annual energy consumption, yearly operating cost, or energy efficiency rating that is available from your retailer.



Our continuing commitment to quality products may mean a change in specifications without notice.  
© 2019 **DAIKIN NORTH AMERICA LLC** · Houston, Texas · USA · [www.daikincomfort.com](http://www.daikincomfort.com) or [www.daikinac.com](http://www.daikinac.com)

